



# Northwest Submarket

|                | 2Q 2013 | 3Q 2013 | 4Q 2013 |
|----------------|---------|---------|---------|
| Vacancy        | ↓       | —       | ↓       |
| Net Absorption | ↓       | ↓       | ↑       |
| Construction   | ↓       | ↓       | —       |
| Rental Rate    | ↑       | ↓       | ↑       |

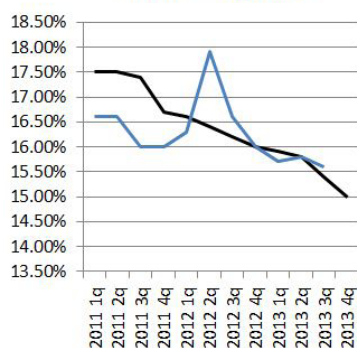
## 2013 Year End Totals

|               | Northwest Office Submarket | Overall Atlanta |
|---------------|----------------------------|-----------------|
| Buildings     | 3,034                      | 15,543          |
| RBA           | 48,160,289                 | 301,411,522     |
| Total Vacancy | 7,524,149                  | 43,813,555      |
| Vacancy %     | 15.60%                     | 4517654000.00%  |
| Absorption    | 84,211                     | 1,366,397       |
| Rates         | \$18.20                    | \$18.85 PSF     |

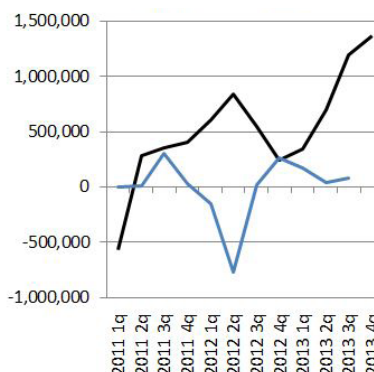
## 3 Year Comparison Graphs

— Atlanta — Northwest

### Vacancy Rates



### Net Absorption



### Quoted Rates

